

CHARMILL

RESIDENTIAL



Randolph Avenue, Little Venice W9

£3,950 + VAT per week. Up to 3 months.
£3,550 + VAT per week for commitment of 12 month let.

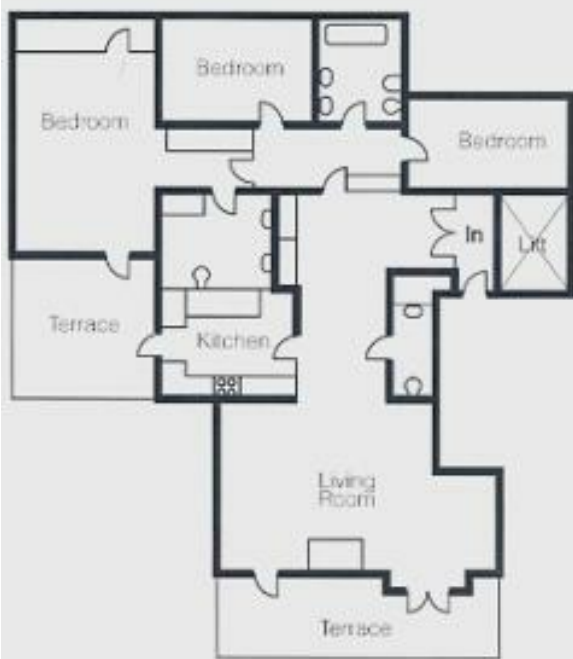
Situated on the top floor and offering stunning views of the beautifully manicured communal garden. Europa House's recently refurbished three-Bedroom Penthouse (1646 SQ FT / 153 SQ M) is directly accessible by a lift. The luxuriously large, open living and dining area offers access to a tranquil terrace.

RATES INCLUDE:

- ALL UTILITIES AND COUNCIL TAX.
- HIGH-SPEED WIRELESS BROADBAND.
- 24 HOUR CCTV.
- DEDICATED CONCIERGE SERVICE.
- HOUSEKEEPING SERVICE.
- WELCOME PROVISIONS ON ARRIVAL
- VAT DROPS FROM 20% TO 4% AFTER 28 NIGHTS IN-HOUSE

£3,900


- ALL UTILITIES AND COUNCIL TAX INCLUDED
- HIGH-SPEED WIRELESS BROADBAND.
- 24 HOUR CCTV.
- DEDICATED CONCIERGE SERVICE.
- HOUSEKEEPING SERVICE.
- WELCOME PROVISIONS ON ARRIVAL
- VAT DROPS FROM 20% TO 4% AFTER 28 NIGHTS IN-HOUSE.
- PARKING AVAILABLE
- ACCESS TO A COMMUNAL GARDEN



**THREE BEDROOM PENTHOUSE
FOURTH FLOOR**

1646 SQ FT / 153 SQ M

Please note that this is a sample floor plan and actual room layout may vary

Energy Efficiency Rating		Current	Potential
Very energy efficient - lower running costs			
(92 plus) A			
(81-91) B			
(69-80) C			
(55-68) D			
(39-54) E			
(21-38) F			
(1-20) G			
Not energy efficient - higher running costs			
England & Wales		EU Directive 2002/91/EC 	

Environmental Impact (CO ₂) Rating		Current	Potential
Very environmentally friendly - lower CO ₂ emissions			
(92 plus) A			
(81-91) B			
(69-80) C			
(55-68) D			
(39-54) E			
(21-38) F			
(1-20) G			
Not environmentally friendly - higher CO ₂ emissions			
England & Wales		EU Directive 2002/91/EC 